

1.0

2011
Grade B
Aluminum
Swivel?



Canter Sand



Saddle



Ancho



Earth



Alfalfa



Mica



Safari



Chestnut



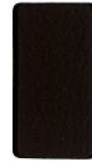
Bordeaux



Night



Willow



Sable

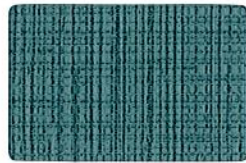


Onyx

Grade C



Beeline Canvas



Geyser



Sprout



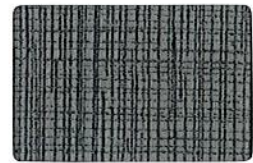
Walnut



Cork



Portobello



Forge

Grade D



Eon Arena



Grove



Goldmine



Blaze



Humid



Freshwater



Mineral



Omega



Path



Mystery



Atlantic



Ascension



Typographic

Grade F



Silica Dare



Cumulus



Burnished



Appletini



Skyward



Brownstone



Terra



Marigold



Haze



Quartz



Coppercrest







Alloy



Nero

2013 - Fth
2015 - dixon

54" - Pattern	Fiber Content & Backing	Finish	Abrasion (D.R.)	Light-fastness	Approx. Repeats	Cleaning Code	Grade
BEELINE 	100% Polyurethane / PVC Free Polyester Backing	Anti-microbial, Anti-bacterial	500,000	40 Hrs. Class 4.5		L Bleach Cleanable (4:1)	C
CANTER 	100% Polyurethane / PVC Free Polyester Backing	Anti-microbial, Anti-bacterial	240,000	40 Hrs. Class 4.5		L Bleach Cleanable (4:1)	B
X EON 	100% Polyurethane / PVC Free Polyester Backing	Anti-microbial, Anti-bacterial	500,000	200 Hrs. Class 4.5	3/8" L, 3/8" W	L Bleach Cleanable (4:1)	D
SILICA 	100% Silicone Polyester Backing	n/a	365,000	200 Hrs. Class 4.5		WS Bleach Cleanable (4:1)	F

*ACT® Registered Certification Marks

EXPLANATION OF ACT ICONS FOR UPHOLSTERY

FIRE RETARDANCY

Flammability testing determined as fabric's resistance to burning.



PASSES
California 117

COLORFASTNESS TO WET & DRY CROCKING

Colorfastness to wet & dry crocking refers to the rubbing off of color from the fabric onto clothing, hands or other materials and can occur under wet or dry conditions.



PASSES
AATCC 8-1974 Dry Crocking, Class 4 minimum; Wet Crocking, Class 3 minimum

COLORFASTNESS TO LIGHT

Colorfastness to light is the degree to which fabric will retain its color when exposed to light.



PASSES
AATCC 16A-1974 or AATCC 16E-1976; Class 4 minimum at 40 hours
NOTE: Class 4 minimum at 60 hours is recommended for direct sunlight exposure situations

PHYSICAL PROPERTIES

3 physical property tests include: brush pill test to determine a fabric's pilling. Breaking/tensile strength is the ability of a fabric to withstand tension without breaking or tearing. Seam slippage is the pulling apart of fabrics at the seams.



PASSES
Brush Pill ASTM D3511, 3-4 minimum
Breaking Strength ASTM D3597-D1682-64 (1975) 50 lbs. minimum in warp & weft
Seam Slippage ASTM D3597-D434-75 25 lbs. minimum in warp & weft

For memo samples please contact:

MOMENTUM
TEXTILES

Toll Free 800-366-6839
memosamples.com

ABRASION

Abrasion is the ability of a fabric to withstand damage from wear and rubbing. There is a general contract specification as well as a heavy duty specification.



PASSES
General Contract ASTM 3597 modified (#10 cotton duck); 15,000 double rubs Wyzenbeek Method



Heavy Duty ASTM 3597 modified (#10 cotton duck); 30,000 double rubs Wyzenbeek Method or ASTM D4966 (with 21 oz. weight); 40,000 rubs Martindale Method

CLEANING CODE DEFINITIONS

L: Clean with warm water and mild soap.

WS: Clean with water-based cleaning agents, foam or pure, water-free solvents (Energine, Carbona, Renuzit or other similar products).
Vacuuming or light brushing is recommended to prevent dust and soil buildup.

9to5
seating

9 to 5 Seating
3211 Jack Northrop Ave.
Hawthorne, CA 90250
Tel: 888.925.SEAT --> 888.925.7328
Fax: 866.925.SEAT --> 866.925.7328